

# Miami-Dade County

## 2005 - 2035 Socioeconomic Data\* Review



**Steering Committee Meeting #3**  
**Friday, April 25, 2008**



\*Source: Miami-Dade County Department of Planning & Zoning



## Summary Statistics between 2000 and 2035

2

	2000	2005	2035	Growth (Absolute)		% Growth	
				2000 - 2005	2005 - 2035	2000 - 2005	2005 - 2035
Population	2,204,713	2,359,183	3,278,155	154,470	918,972	7%	39%
Households	774,339	834,414	1,157,627	60,075	323,213	8%	39%
Workers	1,098,554	1,237,644	1,681,501	139,090	443,857	13%	36%
Vehicles	1,479,444	1,411,944	2,311,753	-67,500	899,809	-5%	64%

## Employment Statistics between 2000 and 2035

Employment Sector	2000	2005	2035	Growth (Absolute)		% Growth	
				2000 - 2005	2005 - 2035	2000 - 2005	2005 - 2035
Industrial	122,920	138,809	152,860	15,889	14,051	13%	10%
Commercial	313,675	219,474	279,573	-94,201	60,099	-30%	27%
Service	746,692	1,021,072	1,561,782	274,380	540,710	37%	53%
Total	1,183,287	1,379,355	1,994,215	196,068	614,860	17%	45%

## Total School Enrollment Statistics between 2000 and 2035

Planning Area	2000	2005	2035	Growth (Absolute)		% Growth	
				2000 - 2005	2005 - 2035	2000 - 2005	2005 - 2035
North	92,748	96,265	97,099	3,517	834	4%	1%
Beach/CBD	25,487	35,432	44,012	9,945	8,580	39%	24%
Central	53,996	58,872	60,515	4,876	1,643	9%	3%
South	56,527	77,781	84,517	21,254	6,736	38%	9%
West	62,726	82,223	80,113	19,497	-2,110	31%	-3%
Northwest	52,356	73,323	78,623	20,967	5,300	40%	7%
Total	345,840	423,896	444,879	80,056	20,983	23%	5%



## 2000 – 2035 Vehicles per Household

3

Planning Area	2000	2005	2035
North	1.77	1.57	1.83
Beach/CBD	1.63	1.43	1.68
Central	1.80	1.59	1.85
South	2.23	1.97	2.27
West	2.20	1.95	2.28
Northwest	1.89	1.69	1.96

## 2000 – 2035 Workers per Household

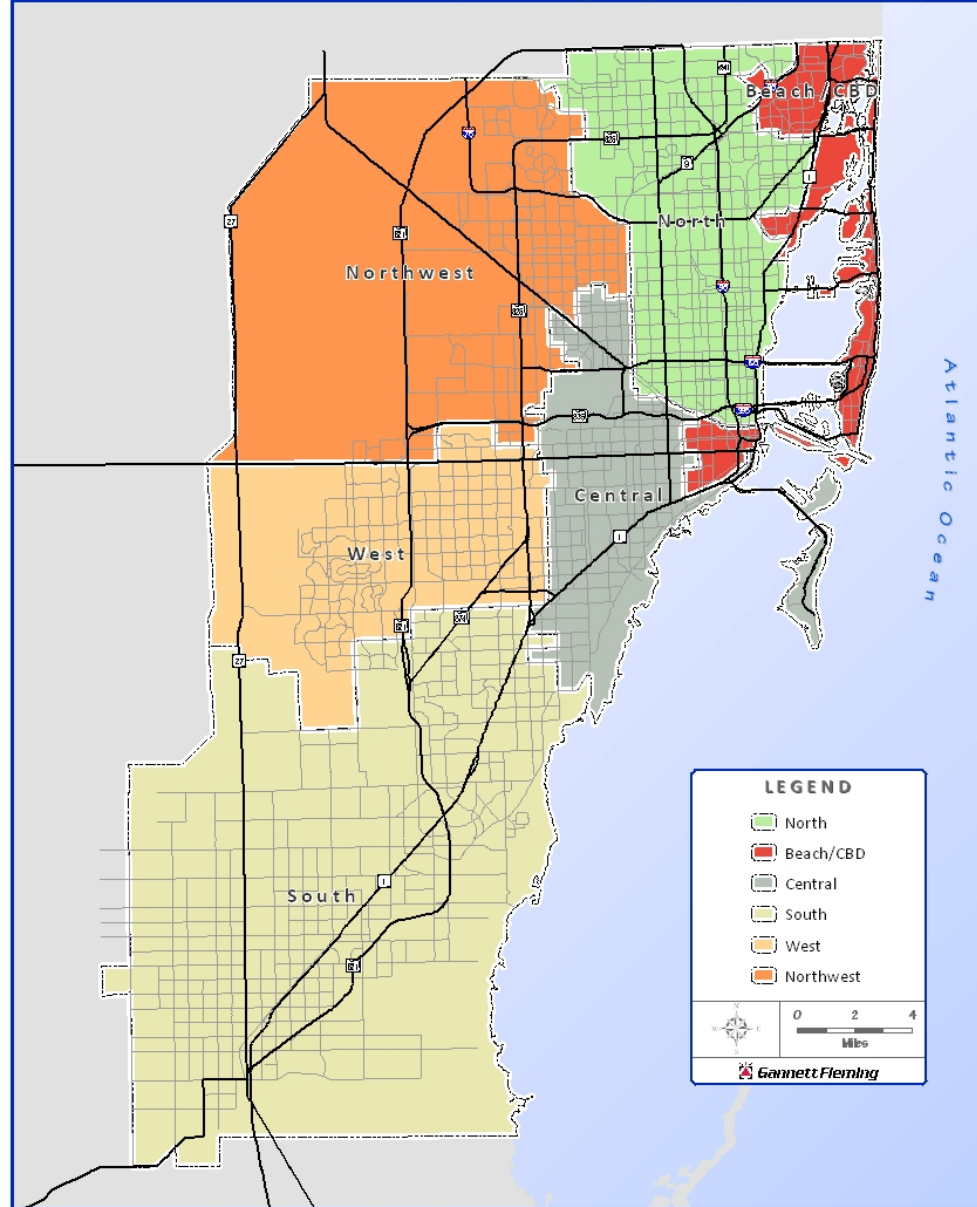
Planning Area	2000	2005	2035
North	1.31	1.37	1.33
Beach/CBD	1.23	1.27	1.24
Central	1.35	1.41	1.36
South	1.65	1.72	1.65
West	1.61	1.68	1.63
Northwest	1.41	1.49	1.43

## 2000 – 2035 Persons per Household

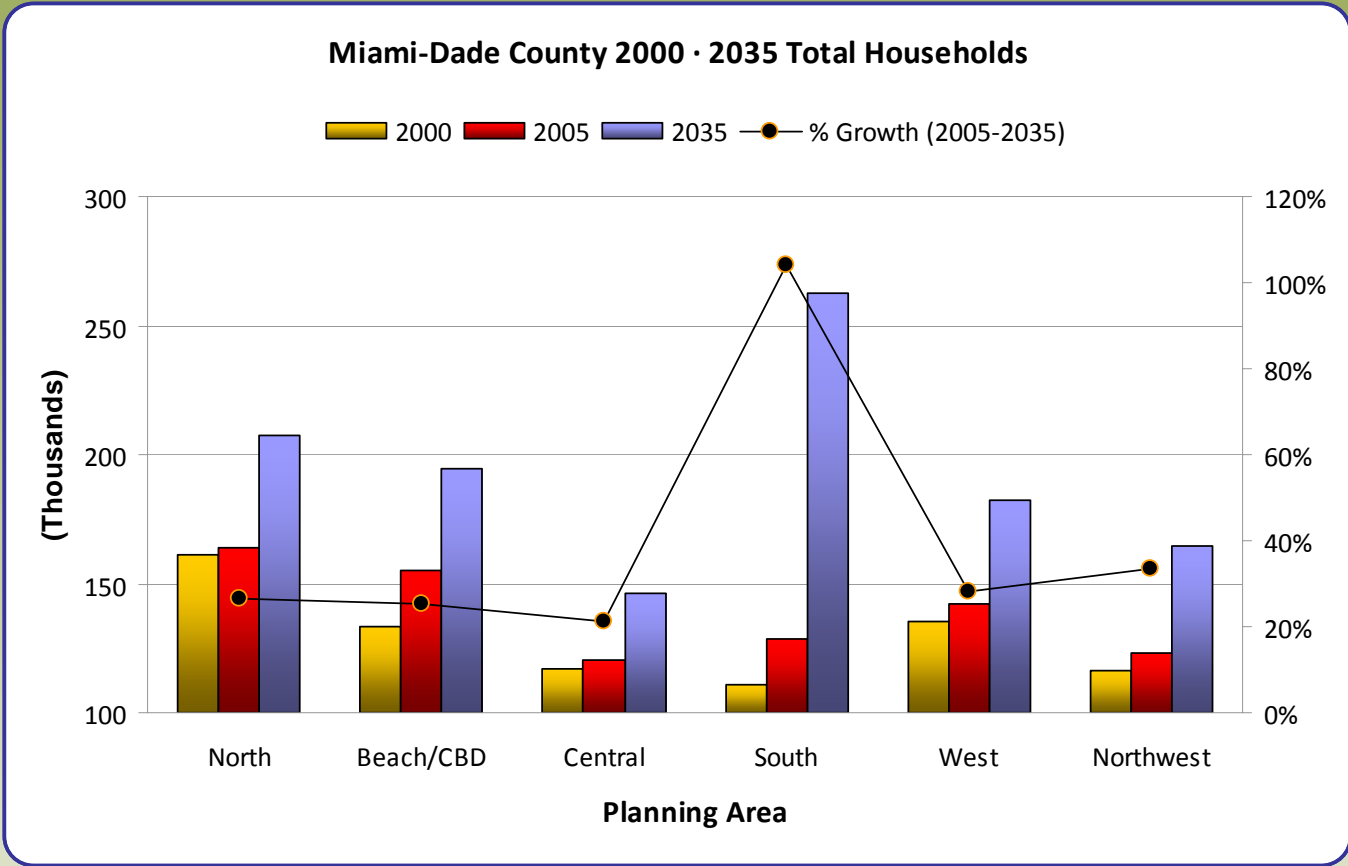
Planning Area	2000	2005	2035
North	2.89	3.06	2.97
Beach/CBD	2.53	2.09	2.19
Central	2.72	2.60	2.61
South	3.06	2.90	2.90
West	2.95	3.17	3.14
Northwest	2.95	3.20	3.16



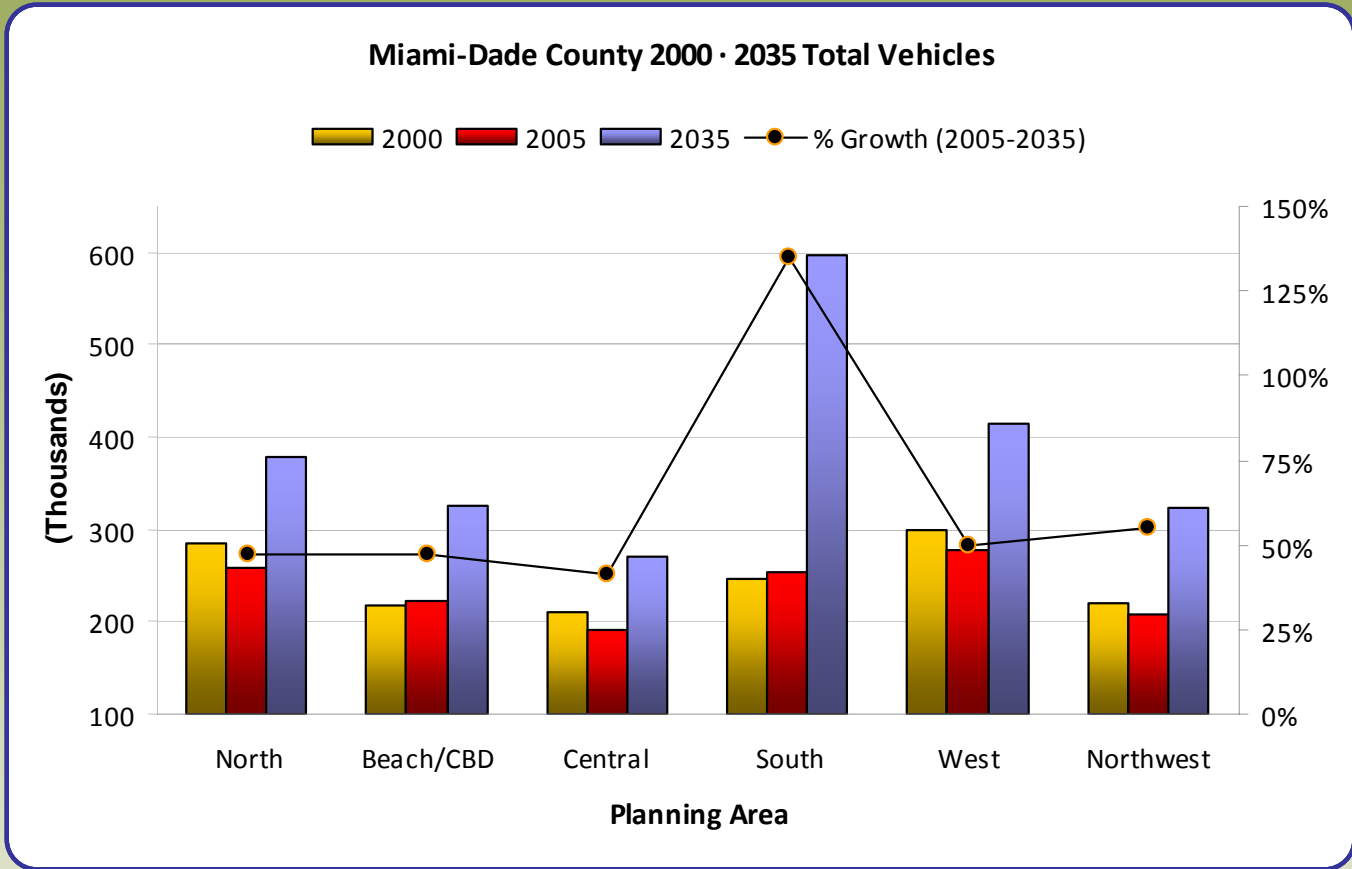
MIAMI-DADE COUNTY PLANNING AREAS  
Miami-Dade County 2035 Long Range Transportation Plan Update



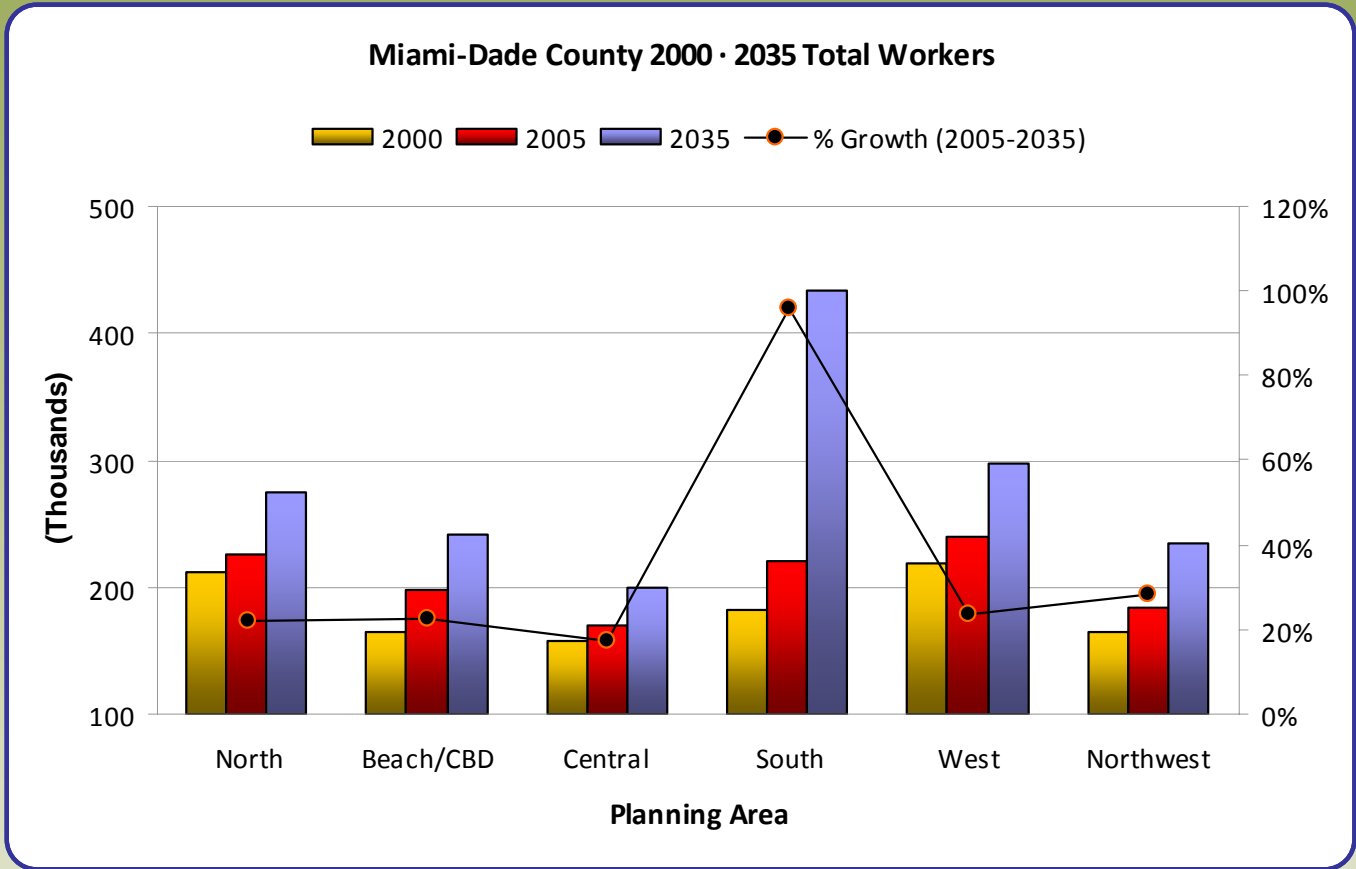
# Production Variables - Households



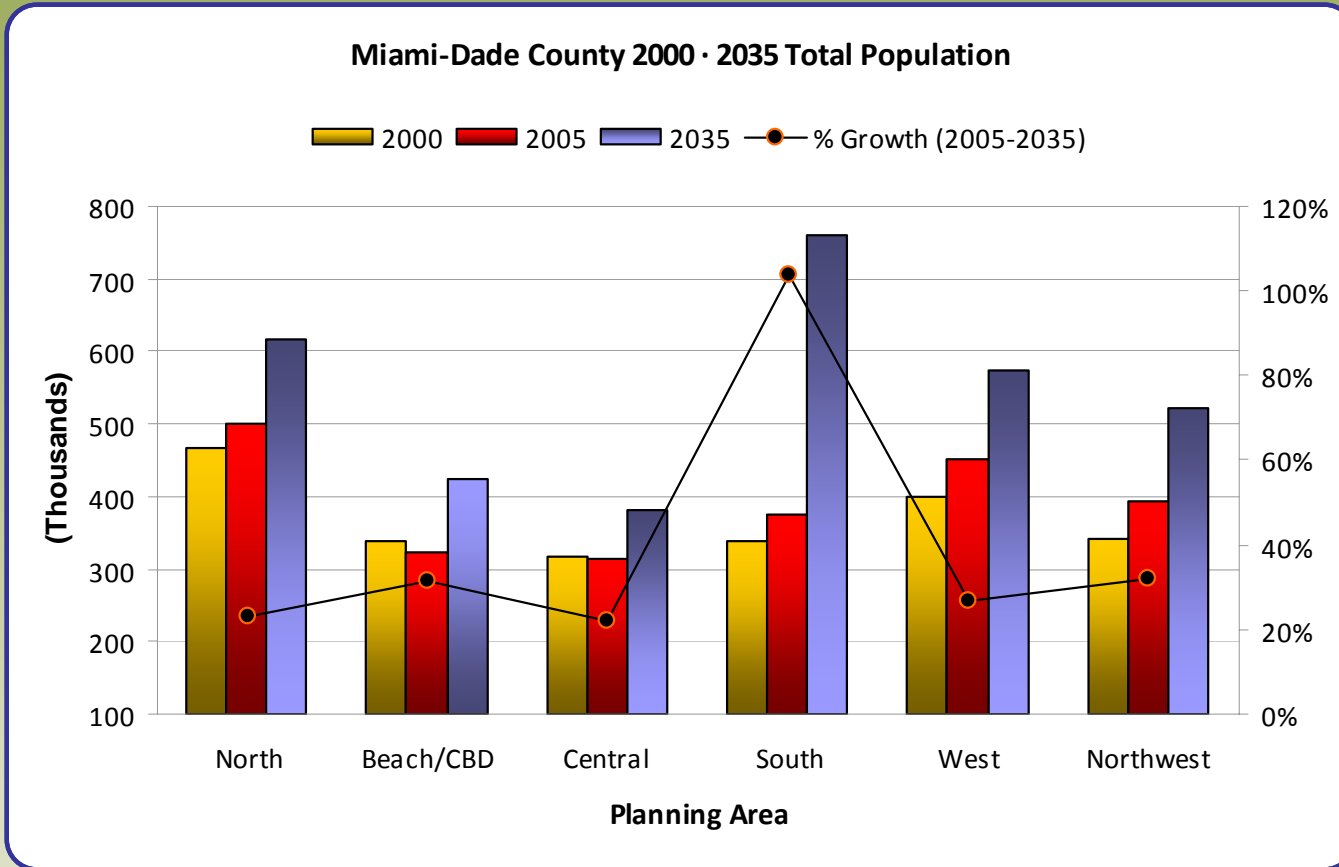
# Production Variables - Vehicles



# Production Variables - Workers

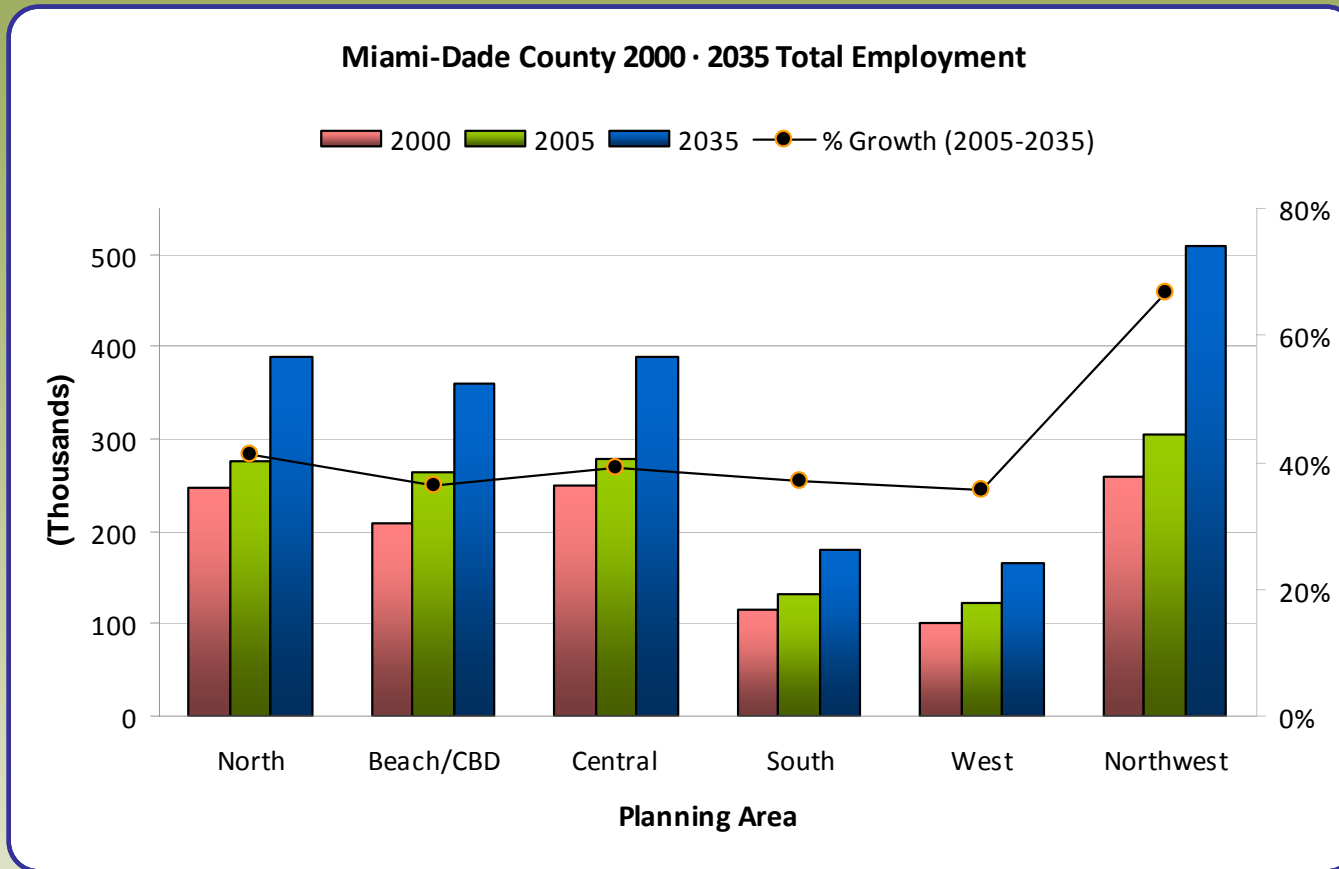


# Production Variables - Population

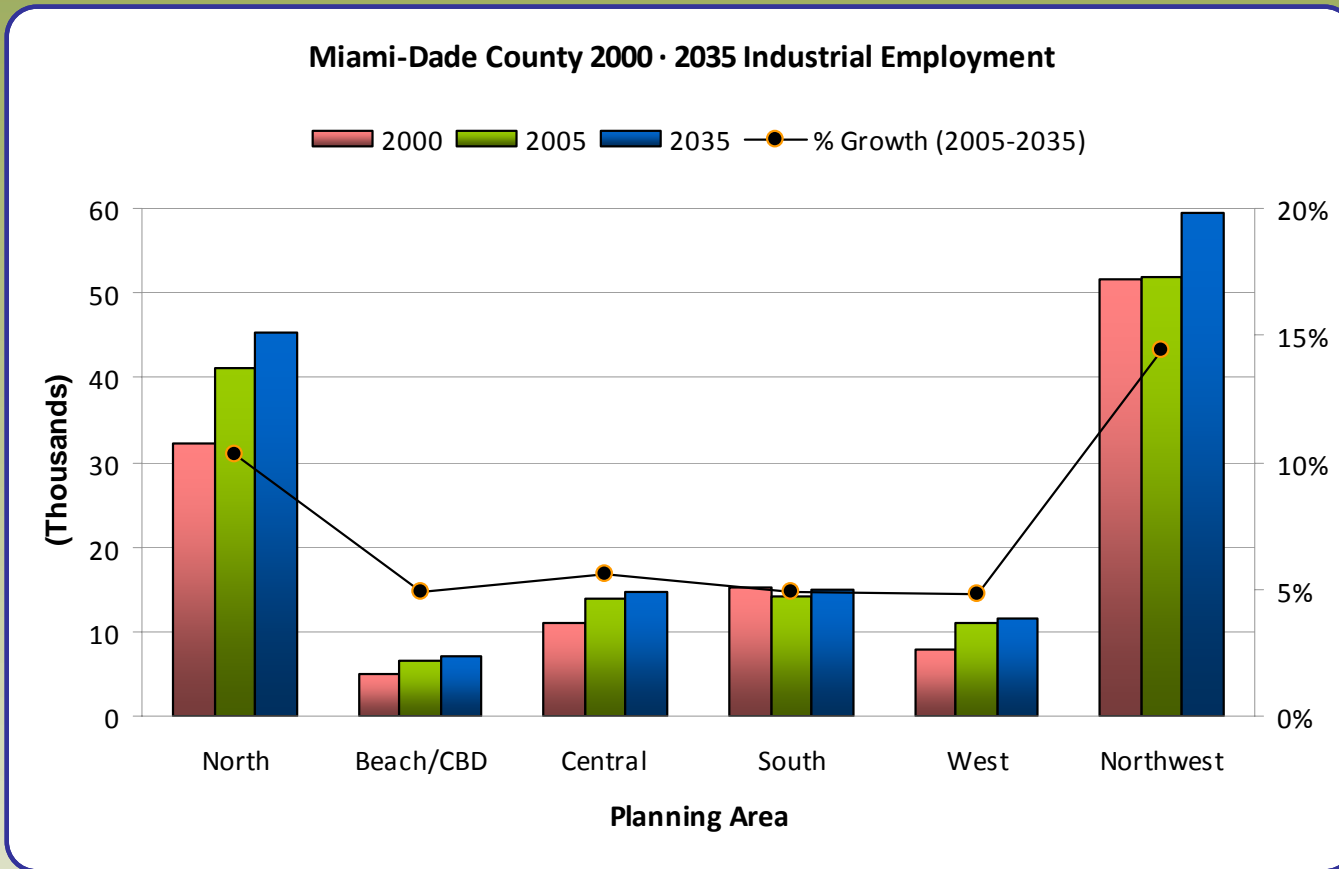




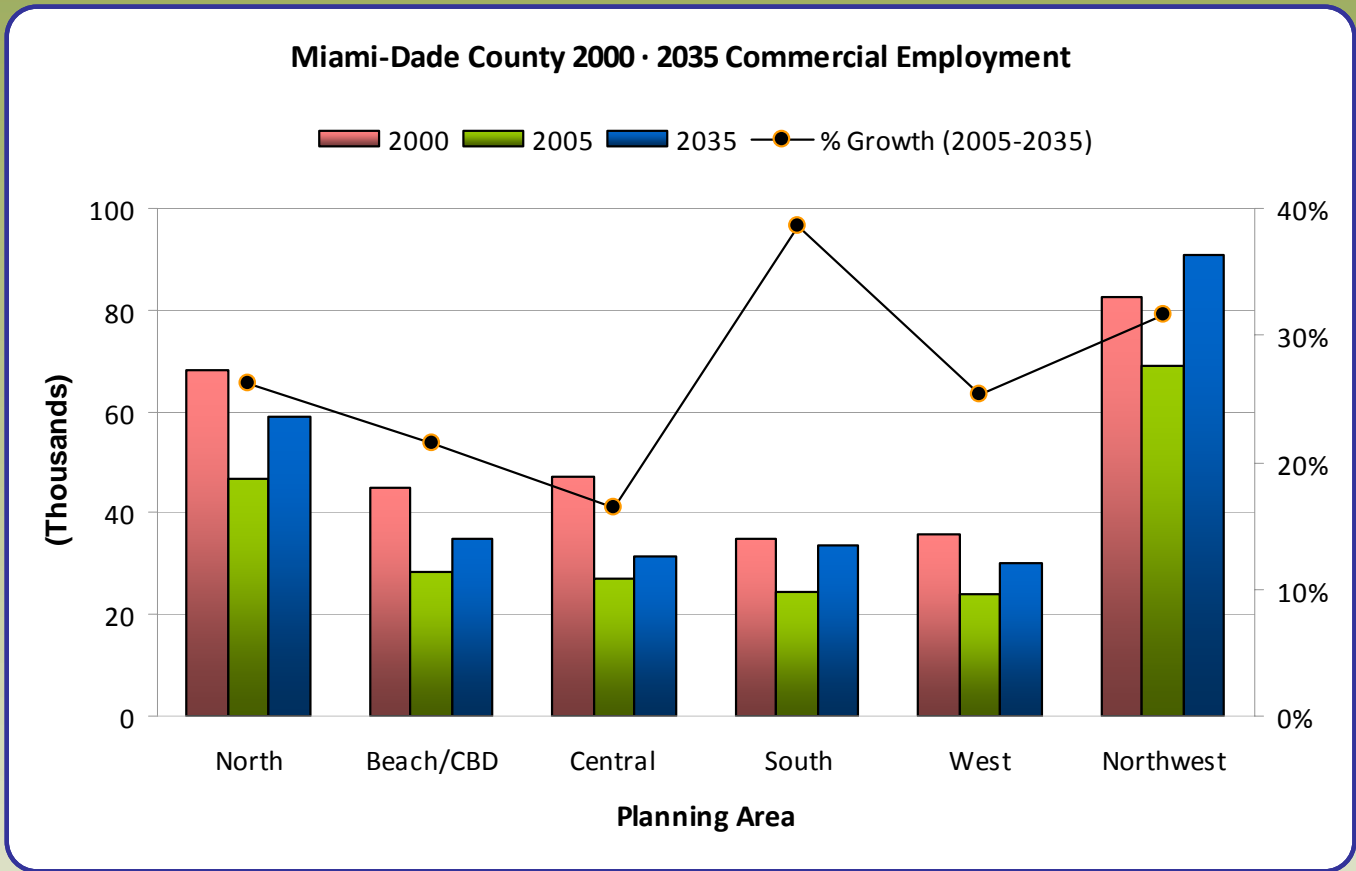
# Attraction Variables – Total Employment



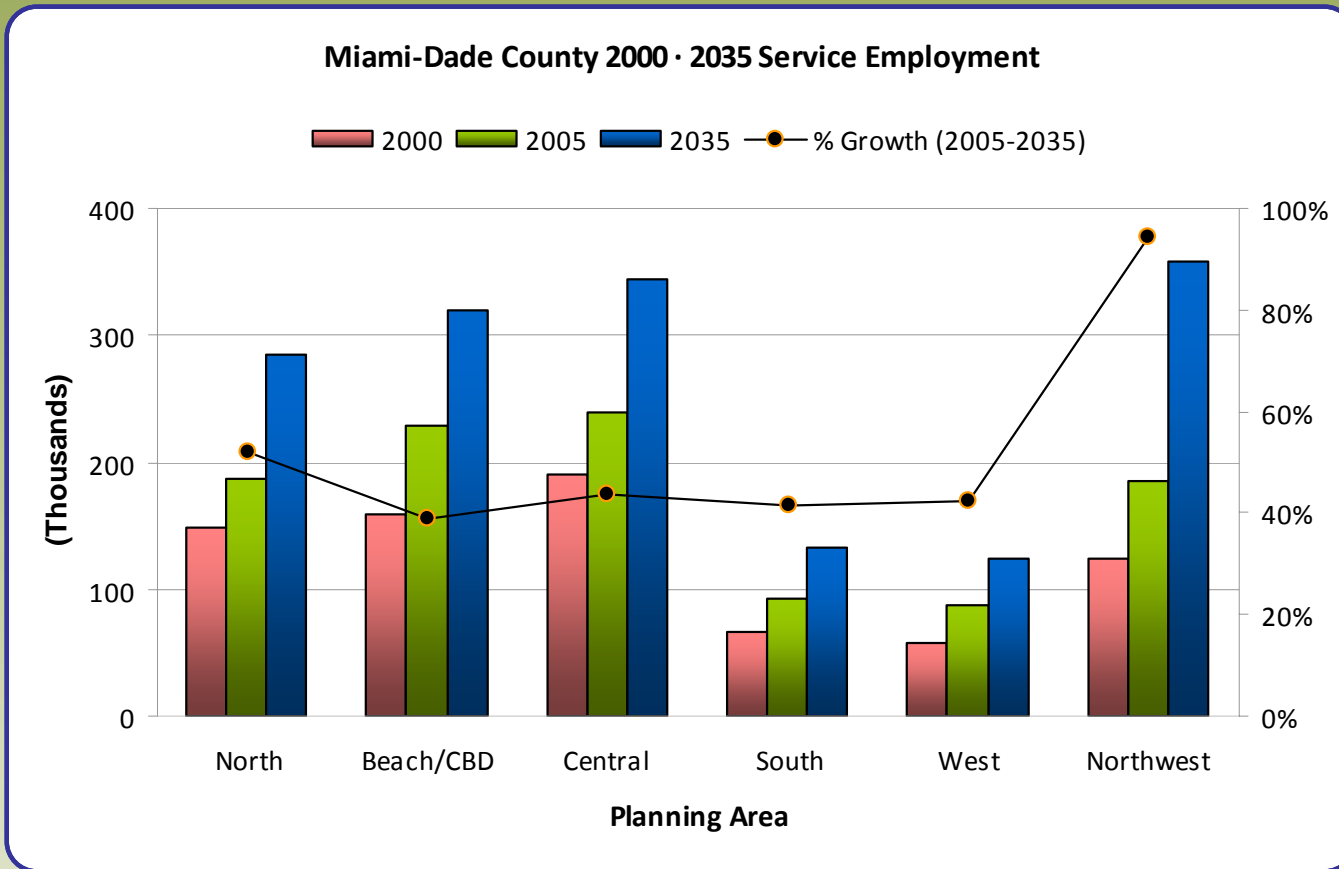
# Attraction Variables – Industrial Employment



# Attraction Variables – Commercial Employment



# Attraction Variables – Service Employment



# Attraction Variables – School Enrollment

